



# MONTHLY MEMBERSHIP PROGRESS REPORT

District 201V6

Results as of: 02/28/2019

GMT: ANN ELDRIDGE

LOCATION AUSTRALIA

GMT CA

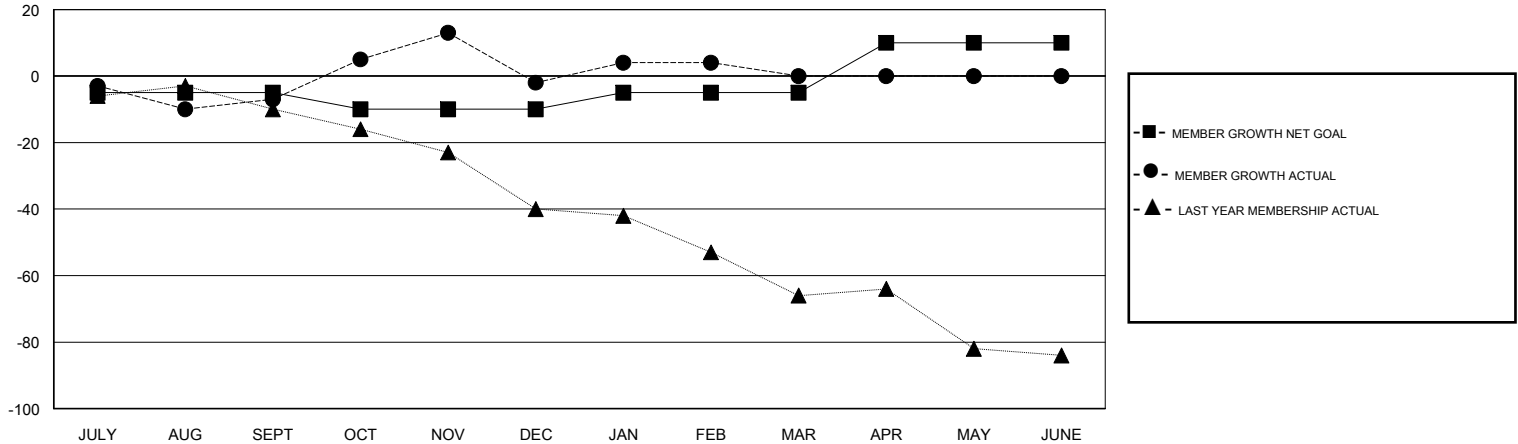
Clubs			
RESULTS FOR 2018-2019			
QUARTER	NEW CLUB GOAL	NEW CLUBS	DROPPED CLUBS
JULY/AUG/SEPT	0	0	1
OCT/NOV/DEC	0	0	0
JAN/FEB/MAR	0	0	0
APR/MAY/JUNE	1	0	0

Members			
RESULTS FOR 2018-2019			
QUARTER	MEMBER GROWTH NET GOAL	MEMBER GROWTH ACTUAL	DROPPED MEMBERS ACTUAL (including transfers)
JULY/AUG/SEPT	-5	27	33
OCT/NOV/DEC	-5	42	36
JAN/FEB/MAR	5	15	5
APR/MAY/JUNE	15	0	0

GOALS AND ACTUAL NEW CLUBS CUMULATIVE



GOALS AND ACTUAL MEMBERS CUMULATIVE



DROPPED CLUBS: 1	32 CLUBS OF 60 ADDED 1 OR MORE NEW MEMBERS	<u>GENDER DISTRIBUTION</u> MALE 891 (73.03%) FEMALE 329 (26.97%) Women Percentage Fiscal Year Goal: 28%
<u>DROPPED MEMBERS</u> DECEASED 15 CLUB CANCELLED 0 OTHER 59 TOTAL 74	<a href="#">CLICK HERE FOR CUMULATIVE MEMBERSHIP DATA</a>	TOTAL FAMILY UNIT MEMBERS 176 FAMILY MEMBERS PAYING HALF DUES 89